



# PTG Tyre Inflation Systems

for agricultural tractors and self-propelled machines





## PTG Tyre Inflation Systems

### “for professionals from professionals”

For almost 30 years PTG designs, produces and sells Central Tyre Inflation Systems (CTIS) for agricultural vehicles. We are one of the world market leaders in this segment and export our products worldwide. The core markets are Western Europe and North America. PTG is part of the Michelin Group since 2018.

### Our Services for OEMs:

- Tyre inflation systems in single- and dual-line technology
- Wide range of air supply systems (piston, screw and vane compressors)
- Tailor-made solutions for specific requirements
- Technical documentation
- 3D data of all PTG components available for installation space investigations
- Installation trainings offered by PTG
- Technical support and high availability of spare parts
- Certified according to DIN EN ISO 9001:2015



## The advantages of an adjusted Tyre Pressure

- Reduced fuel consumption of the towing tractor in the field and on the road (10 % – 15 %)
- Example: 5 cm depth of track = + 10 % diesel consumption
- Reduced rolling resistance in the field and on the road
- Higher ride stability on the road at higher speeds
- Reduction of the track depth caused through bigger footprint of the tyre
- Strong increase of towing force due to better interlocking of the tyre profile with the ground
- None/reduced soil compaction
- Higher yields
- Self cleaning effect of the profile through flexing tyres
- No tyre damages/less tyre wear

This does not effect tractors only, but also trailers and trailed implements. The necessary towing force of the trailer is reduced by reducing the track depth (Bulldozing-Effect).

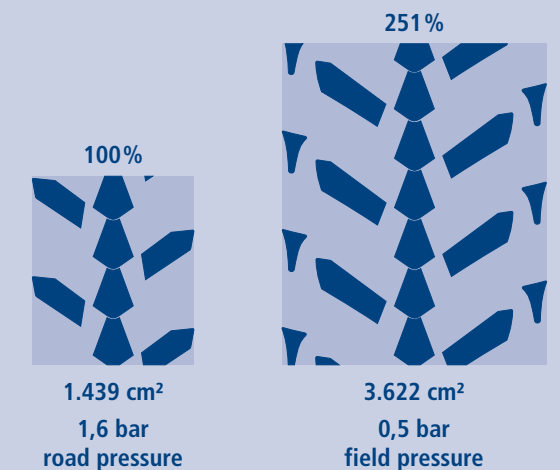


Furthermore CTIS is a competitive advantage for a contractor. Farmers as their customers often demand low tyre pressures on their fields. Also the usage time in the season can be extended, because an operation under difficult soil conditions could be still possible with reduced tyre pressure.

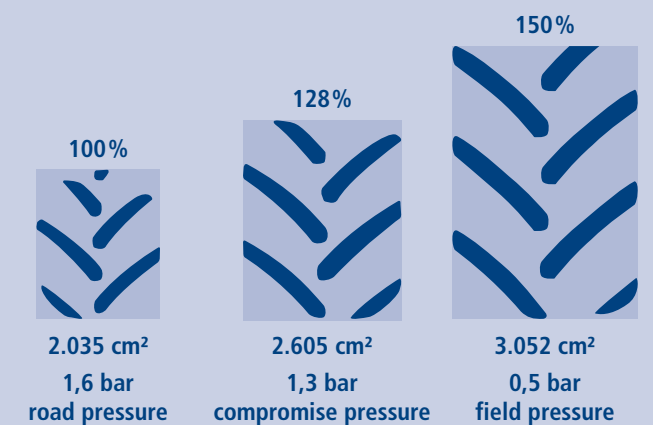
## The advantages of the dual-line technology

- High operational reliability due to automatically switching wheel valves with check functionality
- No pressure loss in the event of line breakage
- No annoying closing of ball valves (single-line technology) to avoid total loss of tyre pressure

### Footprints and ground pressures using the example of a Michelin EVOBIB tyre



### Footprints and ground pressures using the example of a typical radial tyre





## AIRBOX/drive 2L, RDS/radial 2L with digital- or ISOBUS-control dual-line tyre inflation system for agricultural tractors

Pressure change while driving for all tractors and self-propelled vehicles. Safe universal solution.

- AIRBOX/drive: line routing outside around the wheel, can be uncoupled
- RDS/radial: internal rotary union
- dual-line technology, simple (self-) assembly
- With precision control in the range 0.5 bar to 2.5 bar
- Line system pressureless when switched off

### Digital or ISOBUS control for AIRBOX/drive and RDS/radial

- Available for all dual-line systems
- Storage of field and road pressures for 3 different control circuits (front axle, rear axle, trailer)



### PTG 2L Speed wheel valve for AIRBOX/drive and RDS/radial

- Automatically switching wheel valves with check functionality according to the patented and proven dual-line principle (unpressurised lines!)
- Flow-optimised design enables venting times to be cut in half
- Integrated filter-sieve protects against dirt entering from the tyre
- Maintenance free



RDS/radial for all tractors with bar axle

### RDS/radial

- Patented internal rotary union, no external lines
- Dual-line technology, no pressure when system is switched off
- With precision control in the range of 0.5 to 2.5 bar
- Service life of seals achieved: more than 10,000 tractor operating hours



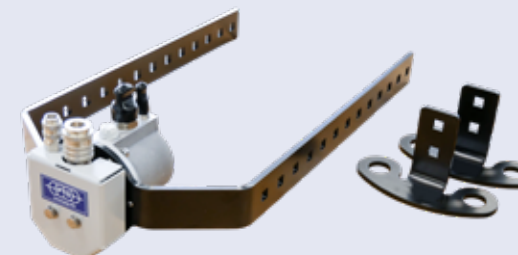
### Telescopic tube

- Sturdy design with new locking system
- Disconnecting the lines and parking on the mudguard possible with a few simple steps



### Rotary union

- Particularly high air passage due to enlarged cross-sections and flow-optimised design
- Quick assembly due to new screw brackets, no welding during assembly
- Maintenance free
- Proven in practice



**Talk to us, we will offer you a suitable Tyre Inflation System for your Tractor!**





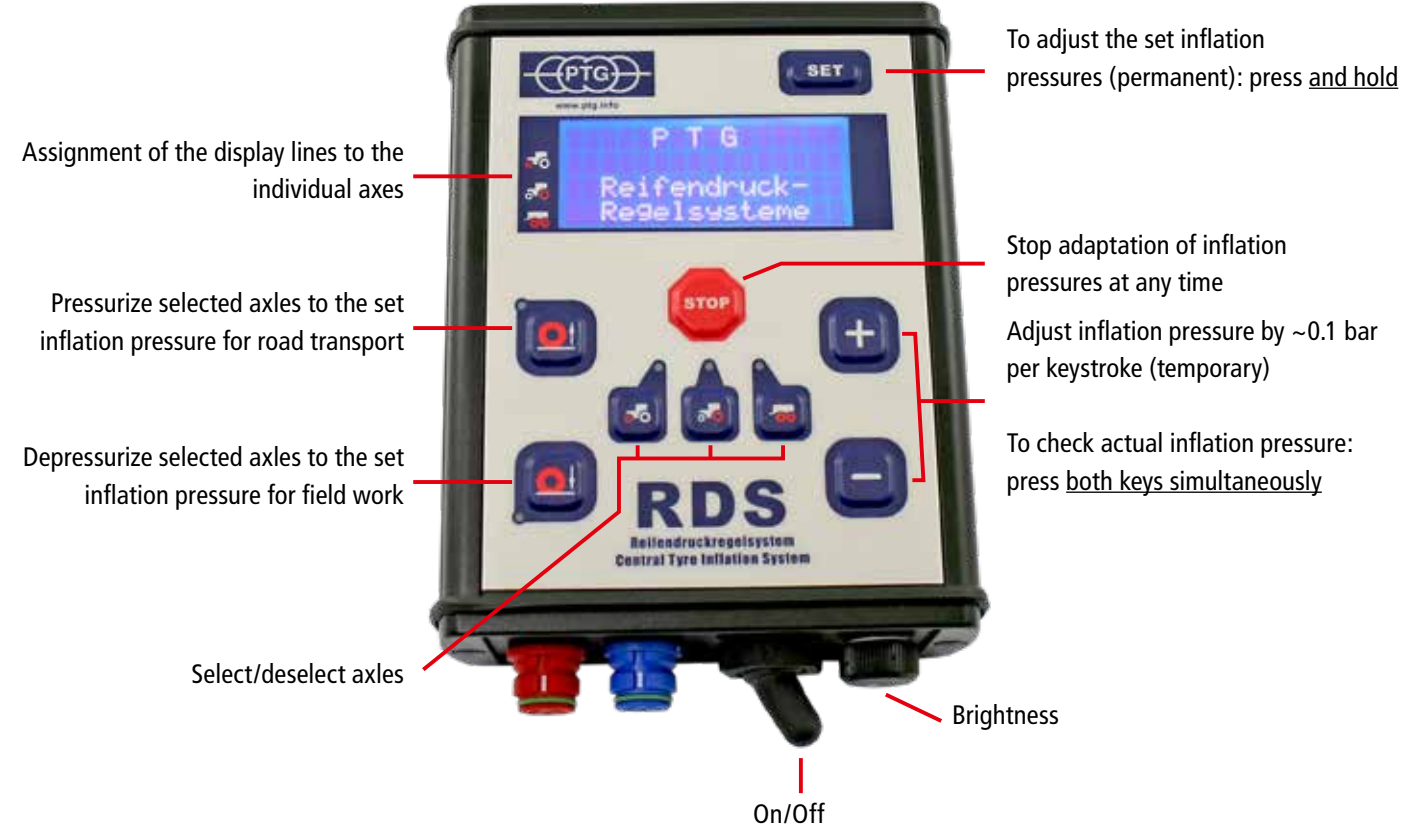
## Air Supply System S1000 (1,000 l/min)

The S1000 hydraulically driven compressor is used on tractors and self-propelled machines where pumping up the wheels with the standard air compressor takes too long. The unit is particularly characterised by its compact design and low power requirement.



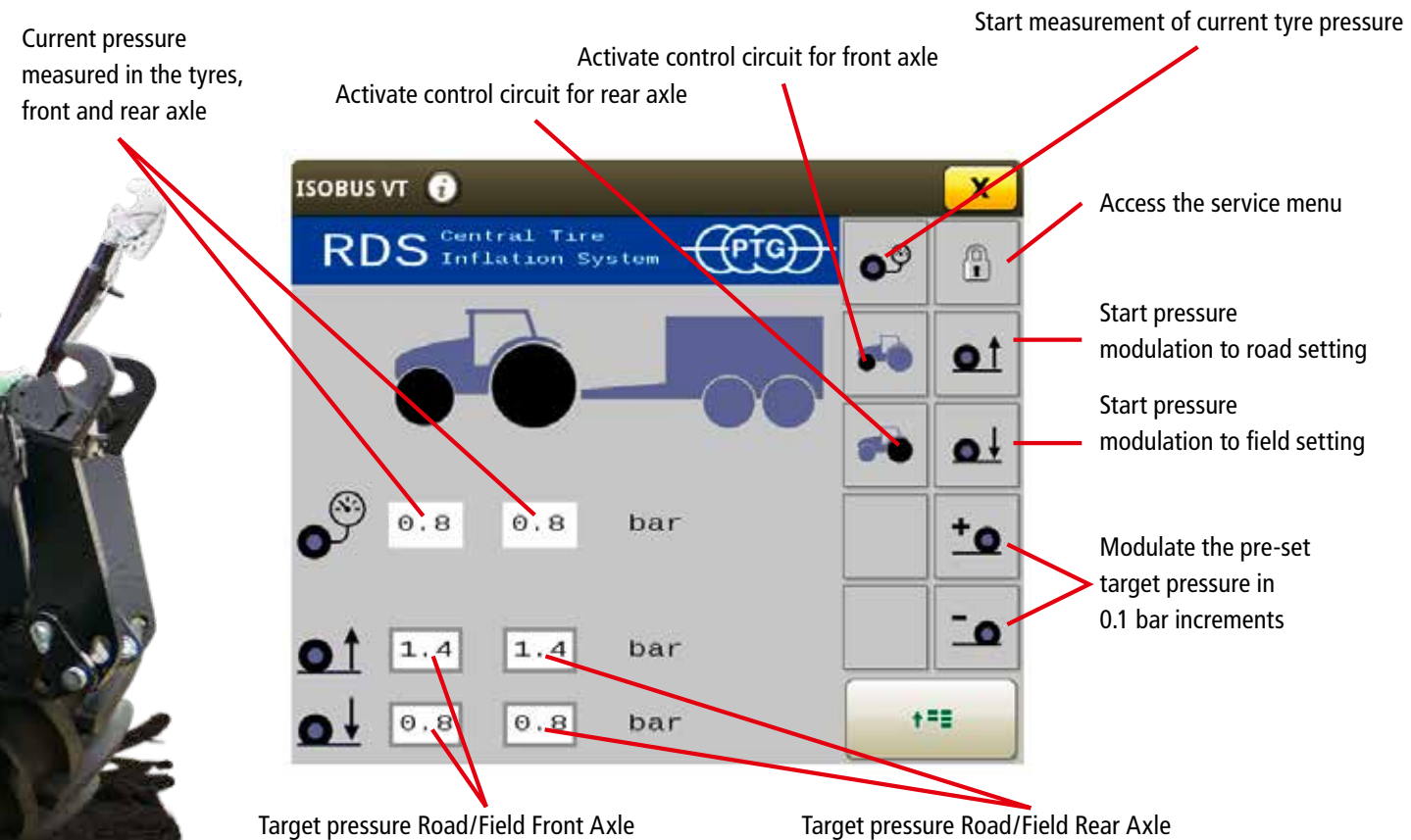
## Digital control for dual-line Tyre Inflation Systems

The tyre pressure control system is operated via the digital PTG control terminal, which can be used for any vehicle.



## ISOBUS control for Dual-Line Tyre Inflation Systems

The tyre pressure control system is operated via the vehicle's ISOBUS control terminal. As the system is internally connected to the vehicle via ISOBUS, the ISOBUS rear socket is not occupied by the tyre pressure control system.





## AIRBOX/drive 2L with digital or ISOBUS controls dual-line Tyre Inflation System for all self-propelled machines.

- Line routing outside around the wheel, can be uncoupled
- Dual-line technology, simple (self-) assembly
- With precision control in the range from 0.5 bar to 2.5 bar (up to 6.0 bar on request)
- Line system pressureless when switched off

The AIRBOX/drive dual-line Tyre Inflation System with digital or ISO-BUS control can be configured for all self-propelled machines. The possible pressure range can be between 0.5 bar - 6.0 bar and is adapted to the existing tyre variant. Couplable lines continue to enable road travel of extra-wide machines.

### PTG 2L Wheel valve for AIRBOX/drive

- Automatically switching wheel valves with check functionality according to the patented and proven dual-line principle (unpressurised lines!)
- Integrated filter-sieve protects against dirt entering from the tyre
- Maintenance-free



### Telescopic tube

- Sturdy design with new locking system
- Disconnecting the lines and parking on the mudguard possible with a few simple steps



### Digital or ISOBUS Control for AIRBOX/drive

- Available for all dual-line systems
- Storage of field and road pressures for 2 different control circuits (front axle, rear axle)



### Rotary transmission

- Particularly high air passage due to enlarged cross-sections and flow-optimised design
- Quick assembly due to new screw brackets, no welding during assembly
- Maintenance free
- Proven in practice



Talk to us, we will offer you a suitable Tyre Inflation System for your self-propelled machine!



# ZEN@TERRA®

## Comfort control for PTG tyre pressure control systems from Michelin



### Advantages of ZEN@TERRA

- Storage of optimum tyre pressure for up to 30 different tractor, attachment and trailer combinations
- Selection of the optimum tyre pressure with just a few clicks
- Even inexperienced drivers can easily set the right air pressure.
- High level of safety due to visual and audible warning if tyre pressure is too low for current speed
- With "Boost" function: the minimum pressure can be briefly undershot, e.g. to free stuck vehicles.

Up to 30 different air pressures can be stored for road and field use. No matter with which attachment or trailer, the tractor works with ZEN@TERRA, the driver can set the optimum air pressure in all tyres with just a few clicks.

The multitude of different optimum air pressures is determined in advance by the "Agro-Pressure" app. For this purpose, the user enters all machine and tyre data once on the Internet. Particularly important are the exact axle loads, which are ideally determined using scales.

The calculated air pressures are then validated by Michelin and simply uploaded to the ZEN@TERRA control unit via Bluetooth. This means that the user no longer has to worry about tyre damage caused by incorrect air pressure.

### Technical requirements:

Isobus-capable on-board terminal, PTG tyre pressure control system with dual-line technology and ISOBUS control.

**ZEN@TERRA is currently available for the following Michelin tyres with Ultra-Flex technology:**

MICHELIN EVOBIB



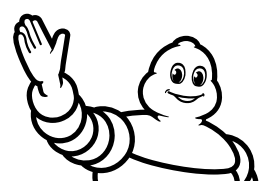
MICHELIN AXIOBIB



MICHELIN AXIOBIB 2



MICHELIN XEOBIB



# MICHELIN

## AIRBOX/drive 1L with pneumatic control single-line Tyre Inflation System for agricultural tractors

Pressure change while driving for all tractors and self-propelled vehicles.

- Inexpensive universal solution.
- Line routing outside around the wheel, can be uncoupled
- Single-line technology, simple (self-) assembly
- With precision control in the range of 0 bar to 2.5 bar

### PTG 1L Wheel valve for AIRBOX/drive

- Hand-operated ball valve
- Must be closed manually before parking the vehicle



### Telescopic tube

- Sturdy design with new locking system
- Disconnecting the lines and parking on the mudguard possible with a few simple steps



### Pneumatic control

- Field and road pressures are set via the pressure regulators and selected via lever.



### Rotary transmission

- Quick assembly due to new screw bracket, no welding at assembly
- Maintenance free





## Tyre pressure adjustment when stationary

### AIRBOOSTER®plus Tyre Quick Inflation/Deflation Kit

Pressure change at standstill.

AIRBOOSTER®plus for all vehicles

- Can be used immediately after installing the PTG quick coupler
- Deflation in one minute, inflation in two minutes (per wheel)
- Unbeatable price-performance ratio



### AIRBOX/mobil Tyre Quick Inflation/Deflation Kit

Pressure change at standstill. One suitcase for all vehicles on your farm

- With automatic control (setpoint setting)
- Carrying case for per axle tyre pressure adjustment
- Can be used immediately after installing the PTG quick coupler
- Precision control in the range 0 bar to 2.5 bar



**TreadRight**

90 Samnah Crescent, Ingersoll, Ontario

N5C 3J7

Ontario, Canada

KevinBarnim@treadright.ca